

**Heightened Tropical Cyclone Activity in the North Atlantic:
Natural Variability or Climate Trend?**

Greg J. Holland¹ and Peter J. Webster²

¹Mesoscale and Microscale Meteorology Division, ESSL, National Center for
Atmospheric Research, Boulder, Co 80307, USA

²School of Earth and Atmospheric Sciences, Georgia Institute of Technology, Atlanta,
Georgia, 30332, USA

Accepted for: *Philosophical Transactions of the Royal Society A*

We find that long-period variations tropical cyclone and hurricane frequency over the past century in the North Atlantic Ocean have occurred in the form of three, relatively stable regimes separated by sharp transitions. Each regime has seen 50% more cyclones and hurricanes than the previous regime and is associated with a distinct range of sea surface temperatures (SSTs) in the eastern Atlantic Ocean. Overall, there appears to have been a substantial 100-year trend leading to related increases of over 0.7°C in SST and over 100% in tropical cyclone and hurricane numbers. It is concluded that the overall trend in SSTs and tropical cyclone and hurricane numbers is substantially influenced by greenhouse warming. Superimposed on the evolving tropical cyclone and hurricane climatology is a completely independent oscillation manifested in the proportions tropical cyclones that become major and minor hurricanes. This characteristic has no distinguishable net trend and appears to be associated with concomitant variations in the proportion of equatorial and higher-latitude hurricane developments, perhaps arising from internal oscillations of the climate system. The period of enhanced major hurricane activity during 1945-1964 is consistent with a peak period in major hurricane proportions.

Keywords: Hurricanes, tropical cyclones, climate trends, regime change, global warming.

1. Introduction

The North Atlantic Ocean (NATL) region experienced unprecedented tropical cyclone activity in 2005, with records including: 28 named systems, 14 hurricanes (of which 7 were major hurricanes), 3 category 5 hurricanes, and 2 category 4 hurricanes in July. The number of tropical cyclones and hurricanes was, respectively, 2.5 and 2.2 times the long-term seasonal means and the previous record for overall tropical cyclone numbers was exceeded by 33%. Whilst the entire season was active, August and September, each with 5 tropical cyclones, were below previous records. The truly anomalous months were July and October, with 5 and 6 tropical cyclones, respectively. October experienced almost twice the mean of 3.1 hurricanes and equaled the previous record set in 1950. July tropical cyclones are relatively rare, typically occurring in less than one every two seasons, with an overall average of 1.2, providing less than 5% of Atlantic tropical cyclones. July 2005 was a record with 20% of all 2005 tropical cyclones and an unprecedented two category 4 hurricanes. Several cyclones also developed during June and November-December, however, for this study we shall confine ourselves to the period from July to October, inclusive.

The anomalous year of 2005 occurred at the end of an extremely active decade. When compared to the previous most active decade in the North Atlantic, the number of named tropical storms increased by 43%, hurricanes by 51% and category 4 and 5 storms by 47%. This recent decade of high activity has raised questions of whether it has arisen from 'natural' variations (not influenced by humans) or the result of substantial influence of anthropogenically-induced climate changes. A formal statement released by NOAA after the 2005 hurricane season stated unequivocally, with no reference to peer-reviewed literature to the contrary, that the current high level of activity was entirely due to natural variations (<http://www.magazine.noaa.gov/stories/mag184.htm>). Here we present an analysis of the variations in NATL tropical cyclone activity over the past 100 years in an attempt to clarify the potential impact of anthropogenic climate change on tropical cyclone and hurricane activity.

2. Data and Method

2.1 *NATL Tropical Cyclone Data*

A definition for hurricane intensity is given by the Saffir-Simpson Hurricane Categories (<http://www.nhc.noaa.gov/aboutsshs.shtml>) that can be used to define three basic classes of tropical storm: major hurricanes (hurricane category 3-5 and winds $> 49 \text{ ms}^{-1}$) minor hurricanes (hurricane categories 1-2 and winds $33\text{-}48 \text{ ms}^{-1}$) and tropical storms (maximum winds $17\text{-}32 \text{ ms}^{-1}$). We use the “best-track” tropical cyclone data base from the National Hurricane Center (Jarvinan et al. 1984). The only changes to the data set data have been to include the intensity corrections recommended by Landsea (1993). Whilst these data represent the best available descriptions of track and intensity, they are variable in quality and accuracy to a largely unknown degree due to changes in observing systems and analysis practices. The major observing system change points are (Fig. 1): the implementation of routine aircraft reconnaissance in 1944-45, the use of satellite observations and related analysis procedures from the late 1960s onwards, and a change in analysis practice by the NHC from 1970 to include more mid-latitude systems. In addition, there have steady improvements in techniques and instrumentation. Balancing the early observational problems was a tendency for ships to provide better information on tropical cyclones, as they were less apt to avoid storms being without the excellent warning system that is now available (Holland 1981, Mann and Emanuel 2006).

Although it is impossible to quantify the absolute errors in the data base, we have adopted the following guiding principles. First, we focus our analysis on periods when there has been a major shift in tropical cyclone characteristics in a short period of time, which is less likely to be attributable to a known observing or analysis changes. Second, different periods in the data record are chosen to emphasize cyclone numbers and intensities in recognition of the varying quality in observing these parameters.

The period 1855-2005 was used to enable a long-period assessment of general variability of tropical cyclone frequency. Before 1945 the overall statistic of total tropical cyclones numbers contains useful information. However, for the period prior to 1945 we consider that intensity estimates are too uncertain for definitive analysis, especially for differentiating between hurricane classes. Since the advent of aircraft

reconnaissance in 1945 we consider that intensities are sufficiently accurate to provide a reasonable differentiation between major (category 3 to 5) and minor hurricanes (category 1 and 2), and between hurricanes collectively (from category 1 to 5) and tropical storms. From 1970 onwards the use of satellites to complement aircraft reconnaissance has aided further in the differentiation between the classes of storms, especially in regions not routinely covered by aircraft reconnaissance. In this regard, we concur with the assessment of Neumann et al (1993), Goldenberg et al (2001), Owens and Landsea (2003) and Landsea et al. (1999) who conclude that the period of reliable and accurate records for the determination of hurricane intensity in the NATL commenced in 1944. The exception to this conclusion is subtropical developments,, which were not analyzed prior to 1965 due to analysis practice (e.g. Simpson and Pelissier 1971, Spiegel 1970). These systems are therefore not included in this analysis. Kossin et al (2006) also used a coherent satellite analysis to show that the variability in overall tropical cyclone intensities since 1983 in the North Atlantic data base was accurate.

In summary, we consider that the veracity of the NATL tropical storm data base is sufficient to enable the broad brush analysis that we undertake in this study. Prior to 1945 we concentrate on the total number of tropical cyclones, irrespective of intensity. After 1945 we extend the analysis and consider a broad categorization of total number of cyclones, minor hurricanes (categories 1 and 2) and major hurricanes (categories 3 to 5).

Questions have been raised over the quality of the NATL data even for such a broad brush accounting. A recent study by Landsea et al (2006) claimed that long-term trends in global tropical cyclone numbers and characteristics cannot be determined because of the poor quality of the data base, though they did indicate that the data in the NATL were of better quality than elsewhere. We have carefully examined the data record and considered as yet unpublished analyses by other investigators (as summarized in Holland and Webster 2007). Our conclusion is that the number of earlier missed storms most likely lies between 1-3 per year prior to 1900, less than 2 in the early 19th century and dropping off to essentially zero by 1960. Landsea et al. (2006) also arrived at the conclusion that there is no trend in any North Atlantic tropical storm characteristics (frequency or intensity) after 1960, apparently without the benefit of additional evidence.

This is at odds with several other studies, Emanuel (2005), Webster et al (2005) and Curry et al. (2006), which found a strong trend similar to that in Fig. 1. To remove the upward trend since 1960 would require the implausible conclusion that up to 5 tropical cyclones were missed prior to 1995.

2.2 Sea-Surface Temperature Data

The SST analyses are derived from the Extended Reconstructed SST set archived at the NOAA Climate Data Center. Averages are compiled over the main hurricane season from July to September and for four geographical regions: Eastern Atlantic (5-25°N, 55-20°W), Western Atlantic (10-25°N, 90-55°W), Gulf of Mexico, and Eastern North Pacific (5-20°N, 120-90°W). The Eastern and Western Atlantic regions include both the main cyclone development region defined by Goldenberg and Shapiro (1996) and the area of tropical SST fluctuations associated with the Atlantic Multi-decadal Oscillation (e.g. Bell and Chelliah, 2006).

Historical SST data have also varied in quality due to changing observing practices and especially with the implementation of satellite observing techniques (e.g. Rayner et al, 2006). Estimates by Kent and Challenor (2006) indicate that the random errors in monthly tropical SST data are of order 1°C and there may be a cool bias during periods of high aerosol loading, such as arising from major volcanic eruptions. The eastern tropical NATL has particular problems due to the low ship traffic before the satellite era and later with satellite algorithm errors caused by the large areas of Saharan dust that are advected over the region. However, Rayner et al (2006) show that SST trends in the tropical regions are accurate to within 0.1°C at the confidence 95% level and this concurs with 100-y trend differences between archived SST data sets of up to 0.25°C (Santer et al 2006). We consider that our averaging over the full tropical cyclone season and further smoothing of the data in time has reduced random error influences to levels below these estimates. As a result, the large trends of order 0.5-1°C found by Webster et al. (2005) and used in this study are beyond the bounds of known errors.

3. Atlantic Tropical Cyclone Changes

Spectral analysis of the tropical cyclone database (not shown) reveals distinct peaks at 2-3, 5, 9 year and multi-decadal time periods. As longer period variations and trends are the focus of this paper, we require the removal of short-term variations, such as associated with the El Nino-Southern Oscillation (ENSO) and quasi-biennial oscillation (QBO), which are both of order 2-3 years in period. We tested filters and averaging periods between 3 and 15 years. The averaging showed considerable sensitivity to smoothing period out to 5 years but relatively stable at longer averaging periods. All data are therefore smoothed by a simple 9-y running mean.

Standard statistical tests are used throughout. Unless otherwise indicated all variance and correlation coefficients are valid at the 95% level using the t-statistic with correction for serial correlation by assuming the degrees of freedom are given by the number of observations divided by the averaging period.

3.1 Climatic Regimes

Atlantic tropical cyclone numbers since 1855 (Fig. 1) display several climatic regimes separated by sharp transitions, upon which is superimposed substantial interannual variability. The interannual variability is associated with El Nino and other short period phenomena (e.g. Gray 1984) and is not relevant to this study. The tropical cyclone climatic regimes are also closely associated with similar transitions between climatic SST regimes (Figs. 1 and 2) and are characterized by distinctive annual ranges as well as mean changes in both cyclone frequency and SST. Between 1855 and 1900 cyclone numbers averaged 7-9 per year and the SST anomaly remained around -0.1 to -0.2°C. This period was followed by a marked decrease of 30% to an average of 6 tropical cyclones per year from 1905-1930, which we designate climate regime TC1. Annual numbers then increased to a new stable regime averaging around 10 tropical cyclones per year from 1931-1994 (climate regime TC2). This increase was accompanied by a rise in SST of 0.2-0.3°C and an upward shift of the annual variability to typically 6-14 named storms. Since 1995 the NATL has experienced a sustained upward trend in tropical cyclone numbers which may not as yet have settled into a stable regime. Accompanying this increase in tropical cyclone numbers is a marked SST warming to unprecedented anomaly levels exceeding +0.7°C. We suggest that this trend may represent a transition to

a third, and as yet undefined climatic regime (TC3) in which cyclone frequency could stabilize at a significantly higher numbers than characteristic of any previous period.

As shown in Table 1, each of these climate regimes has distinctly different characteristics as well as some similarities. Tropical cyclone frequency increased by more than 50% between each regime; the variance was steady between TC1 and 2, but then jumped by over 60% during TC3. Furthermore, both the annual minimum and maximum number of cyclones has increased substantially between each regime. The overall proportion of hurricanes to total tropical cyclone number has remained remarkably constant, especially since 1945. The higher proportion of hurricanes in the early record (Fig. 3b) was probably due to a tendency to miss weaker systems in earlier years. Since 1905, 80% of the variance in hurricanes is explained by tropical cyclone frequency. For TC1, 2 and 3, eastern NATL SSTs were cool, normal and warm, respectively and there has been a net 0.8°C increase in SST from TC1-3. The annual variance in SSTs has remained constant, and the warming trend arose from a combination of increased low and high seasonal-mean SSTs. Figure 1 also shows that superimposed on the climate regimes is a distinct shorter-term variability. Taken together the overall trend in unadjusted tropical cyclone numbers is significant at the 95% level from all time periods prior to 1920 and is significant from 1890 onwards when the time series is increased by 2.5 cyclones per year prior to 1900 and by a decreasing amount to zero by 1960. The trend in major hurricanes is significant at the 95% level for all time periods prior to 1920 (Richard Smith, personal communication 2007).

We have noted the uncertain quality of the tropical cyclone data base in early years, and there will certainly have been a number of unreported systems. However, we are aware of no known change in analysis or observing methodology that can explain the quite sharp changes between the relatively stable climatic regimes in Figs. 1 and 2, and Table 1, especially since these have been associated with stable hurricane to total tropical cyclone proportions, which have varied by less than 3% over the three regimes. Of particular importance is the way in which changes in the number of tropical cyclones have been accompanied by systematic changes in seasonal mean SSTs over the eastern Atlantic (Figs. 1 and 2, and Table 1). There has been an average of one additional tropical cyclone for each 0.1°C increase in SST and one hurricane for each 0.2°C increase. As the

SST and tropical cyclone data sets are completely independent, the coincidence of trends and steady periods in both data sets offers support to the veracity of each.

Variations in major and minor hurricane numbers and their relative proportions (Fig. 3) are quite different to those found between all tropical cyclones and hurricanes. Specifically, the proportion of major and minor hurricanes has a distinct out-of-phase oscillation, which is not reflected in the more-steady hurricane proportions. This oscillation becomes quite marked after the commencement of reliable intensity measurements in 1945, with a correlation of -0.79 between the proportion of major and minor hurricanes. The changeovers around 1945, 1962 and 1995 correspond closely with the change-points identified by Elsner et al (2000) using a more elegant statistical approach than used here. The oscillation in major to minor hurricane proportions extends over the entire record with little variation in amplitude or period (around 0.16 and 40 years, respectively).

The proportionality relationship between major and minor hurricanes is relatively insensitive to the choice of intensity grouping used; for example, taking the separation either half way through category 2 or halfway through category 3 hurricanes results in essentially the same relationship. Thus, an error of one full category in intensity observations has minimal effect on the overall statistics. We therefore suggest that, whilst the period prior to 1900 is substantially affected by data deficiencies, the upward trend in major hurricanes since 1900 may be real. Certainly the trend since 1945 is not significantly affected by data deficiencies.

The 9-year averaging period hides the fact that the changes between the climatic regimes for major hurricanes are extremely rapid, typically occurring across 1-2 years (Fig. 4). This sharp transition from one climatic state to another is a feature of non-linear time series (Lorenz 1963) and the 1995 change in hurricane numbers has been previously noted by Kimberlain and Elsner (1998) and Elsner et al (2001). Since the SSTs do not change so abruptly and tend to lead the cyclone changes (e.g. Figs. 1 and 2), there is an implication of a rapid phase transition in response to relatively steady SST increases.

The substantial oscillations in proportions of major and minor hurricanes during TC2 were in a period when the numbers of all tropical cyclones and hurricanes remained

relatively stable (compare Fig.1 with Fig. 3a and note Table 1). Thus the period of enhanced hurricane activity and resultant damage during the 50s and 60s was due entirely to changes in proportions of major and minor hurricanes. The current record level of major hurricane activity (Fig. 3a) also has arisen from the coincidence of increasing cyclone numbers in TC3 (Figs. 1 and 2) and an increase in proportion of major hurricanes (Fig. 3b).

As shown in Fig. 5, variations in the proportion of hurricanes forming equatorward of 25°N are almost entirely responsible for the variations in proportions of major hurricanes. These equatorial developments explain 53% of the variance in proportion of major hurricanes since 1905 and 83% since 1945. By comparison, minor hurricane variations arise mostly from developments poleward of 25°N, which explain 65% of the variation in minor hurricane proportions since 1945.

In summary, we suggest that there have been three distinct climatic regimes for NATL tropical cyclones since 1900 (TC1-3), which are distinguished by long periods of consistent tropical cyclone and hurricane activity separated by relatively sharp transitions. Net tropical cyclone and hurricane frequency increased by 50% from TC1-TC2 and again from TC2-TC3, and these changes occurred in conjunction with a sharp warming in eastern NATL SSTs of 0.44 and 0.38°C, respectively.

Superimposed on these climate regimes has been a marked out-of-phase oscillation in the proportion of major and minor hurricanes, which has a sharp changeover phase of one or two seasons and occurs in the absence of any associated changes in hurricane frequency. This changeover in proportional dominance by major and minor hurricanes is defined almost entirely by the proportion of hurricanes that form in equatorial (<25°N) vs mid-latitude (>25°N) regions. For example, the proportion of equatorial developments explains well over 80% of the variance in major hurricanes. There has been no real trend in the amplitude of the oscillation in major hurricane proportion, but when combined with the substantial trend in tropical cyclone numbers, a trend in the number major hurricanes also emerges.

The transition phase since 1995 has seen the NATL experience an unprecedented increase in major hurricanes and associated impacts. This has arisen from an increase in

both the numbers of tropical cyclones and proportion of major hurricanes and is closely associated with a concomitant unique increase in eastern NATL SSTs. This transition implies a move toward a climatic regime with substantially higher tropical cyclone, hurricane, and major hurricane frequency than has hitherto been experienced in the historical record.

3.2 SST Relationships

(a) Prior Studies

Several studies of global tropical cyclone activity have shown that SSTs explain a substantial part of the variance in tropical cyclone variability. Longer period changes in NATL hurricane characteristics were attributed by Gray (1990) and Landsea et al (1999) to SST variations in the eastern Atlantic and Caribbean region. Emanuel (2005) found a close relationship between the sum of the cube of the maximum winds and SSTs, with 65% of the variance explained in the NATL from 1950-2004. Webster et al (2005) noted a strong relationship between global changes in category 4 and 5 hurricanes and SST for period from 1970-2004. A more comprehensive global study by Hoyos et al (2006) used a Bayesian statistics to confirm that there is a strong global relationship between SSTs and category 4-5 hurricanes for the period from 1970-2005. Hoyos et al also found that other atmospheric variables, such as vertical wind shear, did not contribute substantially to the long-term trend for an increase in major hurricane numbers but only to shorter-term interannual variability. Goldenberg et al (2001) concluded that there is a strong relationship between vertical wind shear over the major Atlantic cyclone development region and in-situ SSTs. They also examined tropical cyclone and hurricane variability since 1944 and found a strong relationship with equatorial Atlantic SSTs. Vitart and Anderson (2001) conducted a general circulation modeling assessment that found a strong impact of varying eastern NATL SSTs on tropical cyclone characteristics, apparently related to vertical wind shear changes that also resulted from the SST variations.

In contrast to Vitart and Anderson, Shapiro and Goldenberg (1998) found that direct SST-cyclone relationships explain only a small part of the annual cyclone variance (10%) compared to ~50% for vertical shear and suggested that the SSTs were a

secondary influence on cyclone development after the larger scale environment had been established by other mechanisms. However, their study was based on the period from 1968-1992, which only matches the period of TC2 and one half cycle on major hurricane proportion and included no regime changes. Their signal also was dominated by the ENSO cycle, which impacts vertical wind shear, but for which there is essentially no NATL SST relationship. There are also questions about the method used for calculating the vertical shear, which was done on monthly mean winds instead of the more correct daily winds and their variance.

Klotzbach (2006) disputed the Emanuel (2005) and Webster et al (2005) studies. Using a limited data period from 1986-2005 he suggested that there were only small global changes and that these could be explained by variations in observing practice. Klotzbach did support a large increase in the NATL activity, however the short period used in his study brings question and doubt to the generality of his overall conclusions.

Bell and Chelliah (2006) have found that, when a 5-year filter is passed over the data, two leading modes, which they refer to as Tropical Multidecadal Modes (designated TMM and TMM2), define much of the variability in atmospheric factors thought to influence tropical cyclone genesis and development, including west African monsoon variability (Gray 1990, Goldenberg and Shapiro 1996), vertical wind shear (Gray 1968, Goldenberg et al 2001) and the Atlantic Multidecadal Oscillation (AMO, Folland et al 1986, Delworth and Mann 2000, Goldenberg et al 2001). These so-called TMM and TMM2 modes are highly correlated with the tropical eastern NATL SSTs and combining the two explains 41% and 73% of the 5-year filtered SST observations for 1950-2002 and 1970-2002, respectively.

We concur with the conclusion by Bell and Chelliah (2006) and Kossin and Vimont (2007) that the observed relationship between SST and tropical cyclones arises from their mutual association with coherent large-scale patterns. However, we consider that the conclusion by Bell and Chelliah that the TMM2 mode is oscillatory on multidecadal time scales is difficult to defend using a data set that is only half in length of the proposed oscillation. More likely, as discussed in Section 4.1, the TMM2 is a trend associated with greenhouse warming. The more recent study by Kossin and Vimont (2007) has shown a quite strong relationship of tropical cyclones with the Atlantic

Multidecadal Mode (AMM), which incorporates a combination of oceanic and atmospheric variations and includes the latitudinal shifts in tropical cyclone occurrence identified here. Kossin and Vimont conclude that the current warm phase of the AMM could be responding to warming associated with anthropogenic causes.

(b) Relationship between SSTs and Tropical Cyclones

Figures 1 and 2 clearly show that the transitions between the three main climatic regimes are closely aligned with changes in eastern NATL seasonal SST anomalies. The SST anomalies explain over 60% of the tropical cyclone variance since 1905 and tend to lead the changes in cyclone frequency. Similar results have been found by Mann and Emanuel (2005). This correlation arises entirely from the regime changes defined earlier. As shown in Fig. 2, the regimes are clustered within East Atlantic SST ranges of 25.8-26.2°C (TC1, 1900-1930), 26.2-26.7°C (TC2, 1940-1994) and 26.7-27°C (TC3, 1995-2005). Within each regime the variations in SST are weakly correlated negatively with tropical cyclone frequency. Hurricanes follow a very similar clustering, though with a slightly lower explained variance (56%) by eastern NATL SST anomalies

The oscillation in proportion of major and minor hurricanes (Fig. 3b) bears no relationship with eastern NATL SST anomalies ($R=0.08$ for the period 1945-2005); however, it is highly correlated with SST anomalies in the Gulf of Mexico ($R=0.8$, or 64% of the variance since 1945). There is no evidence of the clustering found for tropical cyclones and eastern NATL SSTs.

The out-of phase-relationship between major and minor hurricanes and SSTs also extends somewhat into interannual time scales. Removing the low-frequency variability to isolate the interannual variability leaves a weak, but still significant, relationship between the proportion of major and minor hurricanes (10% variance explained) and between the proportion of major hurricanes and Gulf of Mexico SSTs (9% variance explained).

An intriguing feature is the way that eastern Atlantic SST tends to lead tropical cyclone frequency, especially for the regime changes (Fig. 1). Taking lagged correlations indicate that even at 5-year lag, the eastern NATL SSTs explain over 50% of the variance in longer period tropical cyclone frequency. A clue for this may lie in the manner in

which sustained ENSO activities may extend over a sufficiently long period to map onto the longer period changes. For example a sustained and record period of warm central Pacific anomalies that occurred between 1990 and 1995 (Trenberth and Hoar, 1996) may have suppressed the tropical cyclone response to the east Atlantic SST warming in this period (Goldenberg et al, 2001).

To summarize, there is a strong relationship between the long-period frequency of tropical cyclone and hurricanes, and SSTs in the main genesis region over the eastern NATL. This relationship appears to arise entirely from the transition between climate regimes. The oscillation between major and minor hurricanes is not related to SSTs in the genesis region, but has a strong association with SST variations in the Gulf of Mexico. Our findings are in agreement with other NATL and global studies (e.g. Emanuel 2006, Webster et al 2005 and Hoyos et al 2006, Kossin and Vimont 2007). We concur with previous studies (e.g. Bell and Chelliah 2006, Kossin and Vimont 2007) that the SST/cyclone number relationship is not entirely direct and that a substantial component arises from the mutual association with atmospheric features that influence tropical cyclone characteristics.

4. Natural Variability or Climate Trend?

Considerable public debate has developed following the record 2005 hurricane season on whether we are experiencing a peak in a long-term cycle of natural variability, or whether the above-average tropical cyclone and major hurricanes activity is part of a trend associated with greenhouse warming. This is an important question and requires serious consideration. The main issue lies with how to differentiate a forced trend from natural variability using the limited available historical information and given the unknown level of uncertainty in this information. The only relationship for which there are reasonable data over a long period is that between tropical cyclones and SST, so we use this as the basis for our discussion here.

4.1 Natural Variability

Bell and Chelliah (2006) provide a detailed summary of natural variability arguments in previous studies for long-period tropical cyclone changes, to which the reader is referred for full information. There are several views on the role of natural

variability, most of which overlap. Landsea et al (1999) concluded that there were no trends in any characteristics of NATL tropical cyclones and that the only signal arises from multidecadal oscillations. However, their analysis covered only the period 1944-1996, or TC2, which we have shown to be dominated by no net trend and a strong oscillation in major hurricane proportion. Goldenberg et al (2001) and Kossin and Vimont (2007) associate the observed changes, including the current enhanced activity, with the Atlantic Multidecadal Mode, which includes a strong correlation between SSTs and cyclone activity in the NATL. All of our climatic regimes are considered to be included in this mode, though we note that Goldenberg et al fail to differentiate between TC1-3 and the independent oscillations in major and minor hurricanes. Elsner and Kocher (2000) used a common factor model to combine the tropical cyclone activity in each ocean basin. They showed that the NATL was out of phase with all other regions, having low activity when others were high and vice versa. They also found a significant relationship with the North Atlantic Oscillation (NAO) which appears to have a decadal period. However their data extended from 1966-1998 and thus covered only part of TC2 and one major/minor hurricane cycle.

Thus, the limited periods used by all of the above studies means that they could not possibly have captured the trend from TC1-TC3. These studies also typically covered only one major/minor hurricane cycle.

The major thesis proposed by Bell and Chelliah (2006) is that the much of the tropical cyclone variability arises from the TMM and TMM2 leading tropical multidecadal modes, which have been derived from the period 1950-2002 and thus include TC2, a part of TC3 and just over 2 major/minor hurricane cycles. They found that the enhanced major hurricane activity from 1950-1960 was associated with TMM, whilst the increased tropical cyclone and major hurricane activity after 1995 was associated with TMM2. Their TMM2 was an atmospheric mode, which is strongly correlated with SSTs in the eastern NATL, implying that the observed increases in cyclone frequency since 1995 are primarily caused by environmental changes associated with increases in these SSTs. We may draw the inference that the TMM is associated with the observed variations in major and minor hurricane proportions. However, TMM does not predict the increase in major hurricane proportions around 1995.

We are in agreement with the findings of Bell and Chelliah (2006), with one major exception. They imply that both TMM and TMM2 are natural modes of variability of the tropics. Yet their data only extend over 55 years which is not even a complete oscillation and is less than the Nyquist frequency for the supposed multidecadal oscillations. Further, the TMM2 mode has only recently appeared and Bell and Chelliah indicate that it seems to be invalid before 1970. It is not possible for their analysis to differentiate between a sustained trend that rose above the noise level around 1970 and an oscillation that will reach some maximum amplitude then return sometime in the future. A more comprehensive study by Kossin and Vimont (2007) arrived at a strong relationship between changes in the AMM and tropical cyclones from TC1 to TC3 and noted that this could not be distinguished from global warming.

Several studies have examined seasonal relationships with tropical cyclone occurrence (e.g. Hess and Elsner 1994, Lehmiller et al 1997, Elsner and Jagger 2006). Statistical forecasting techniques also have been developed for the NATL (Gray 1984, Klotzbach and Gray 2003, Saunders and Lea, 2005). These studies identify five main indicators associated with increased genesis frequency: warm SST anomalies and/or El Nino changes, low surface atmospheric pressures, weak vertical wind shear, variations in the low-level tropical flow, and the phase of the stratospheric Quasi-Biennial Oscillation (QBO). Of these, the El Nino and QBO are interannual processes that are not of interest here. Hess and Elsner (1994) have shown that these predictors work best for tropical cyclones developing from easterly waves. The apparent success of the statistical seasonal forecasts has lead to unpublished claims that this implies a dominance of natural variability in NATL tropical cyclones (Gray and Klotzbach 2006, NOAA 2005). However, these studies are based largely on the period from 1944 and prior to 1995 and thus are from only TC2. All techniques listed above have consistently under-predicted all tropical cyclone parameters in the active period since 1995 and the seasonal forecasts of total tropical cyclone activity have marginal or no skill compared to a simple time-series average and trend. We conclude that such seasonal forecast techniques contain little useful information for detecting the transitions between the climatic regimes identified here.

4.2 Climate Trend

Given the clear and strong relationship between east Atlantic SSTs and tropical cyclone frequency, we examine the potential for a climate trend in tropical cyclones by first considering SST changes. Variations in global surface temperatures over the past century and a half have arisen from a combination of “natural” variability and anthropogenic addition of greenhouse gases to the atmosphere. Meehl et al (2004, 2006) have undertaken an extensive investigation of these global temperature changes using an ensemble of 22 different climate models. They found that known natural forcing mechanisms (including both internal oscillations and external forcing from solar and volcanic effects) can explain much of the variability up to around 1970. However, natural forcing alone would have led to a slight cooling over the period since 1970; the observed upward trend in global temperatures since 1970 can only be explained by greenhouse warming. This is quite similar to the findings by Knutson et al (2006) using an ensemble approach with the NOAA Geophysical Fluid Dynamics Laboratory (GFDL) model.

Santer et al (2006) and Knutson et al (2006) have narrowed this analysis to the tropical cyclone development regions in the NATL and western North Pacific. Santer et al found that anthropogenic changes in greenhouse gases were the major drivers of observed SST changes in both regions and that there was an 84% probability that 67% of the observed trend since 1906 is due to greenhouse warming. In other words, 42% of the observed 0.67°C increase in hurricane season SSTs in the NATL since 1906 can be attributed with a high degree of confidence to anthropogenic gases introduced into the atmosphere. Warming by greenhouse gases dominates the anthropogenic impact, but this can be slowed by radiative cooling associated with anthropogenically introduced sulfates as noted by Mann and Emanuel (2006). The overall proportional contribution between natural variability and greenhouse warming is very similar to that found by Trenberth and Shea (2006) and Mann and Emanuel (2006) using quite different approaches.

An important result of the Santer et al (2006) study is that greenhouse gases have had an impact since the beginning of the 20th century. While their impact has accelerated since 1950, greenhouse gases also contributed substantially to the sharp warming that occurred around 1930, with the other main contribution being from solar forcing.

The Santer et al (2006) results are in conflict with other studies (e.g. Goldenberg et al 2001) that attribute the Atlantic signal in tropical cyclone activity and SST variability primarily to local responses associated with the AMO, which is poorly replicated by the climate models used by Santer et al. We have already noted that the Goldenberg et al study was confined to a single climate regime and did not include the major shifts indicated in Figs. 1 and 2. Several recent studies also argue against such a dominant role by the AMO. The variation in tropical SSTs under the AMO is closely related to changes in the Atlantic Thermohaline Circulation (THC, e.g. Knight et al 2005). Mann and Emanuel (2006) have analyzed NATL SSTs from the late 19th century and concluded that there is “no apparent role of the AMO” and that the observed warming is global in nature and associated with a combination of greenhouse warming and a partially compensating cooling from sulphate aerosols.

The AMO is an Atlantic phenomenon, with the major signal in the eastern Atlantic region. There is some disagreement on its global characteristics: Knight et al (2005) found a negligible global signal, while Enfield et al (2001) and Sutton and Hodson (2005) find a global signal, particularly in the North Pacific. Trenberth and Shea (2006) showed that removal of the global warming trend left very little contribution by the AMO to recent warming of the North Atlantic, and this is supported by recent modeling results from Santer et al (2006). Since eastern North Pacific SST variations have been shown to be unassociated with the AMO (Sutton and Hodson, 2005), we can use this region to check the potential AMO contribution to the SST trend in Fig. 1. Figure 6 contains the anomaly series for the eastern Atlantic, western Atlantic, Gulf of Mexico, and eastern North Pacific regions. All regions exhibit the same major features and the eastern North Pacific (black dashed line) explains 76% of the variance in the eastern NATL (red line). Importantly, both the overall trend and the sharp transitions in eastern NATL SST associated with regimes TC1-3 are also present in the eastern North Pacific. However, there are also notable differences: the 9-year mean eastern Atlantic SSTs have warmed by 0.55°C compared to the 1850-1900 average and by 0.85°C since the coldest period around 1910-1920, whereas the eastern Pacific has warmed up by 0.3°C and 0.6°C over corresponding periods. We next isolate a potential regional signal for the eastern Atlantic by taking differences with each of the other series (Fig. 7). This reveals a distinct

multidecadal oscillation in the residual eastern NATL, western NATL and Gulf of Mexico SSTs with a period of 40-50 years and amplitude of 0.2°C. Compared to the full SST anomaly shown in Fig. 6, the amplitude is about 50% and the distinct upward trend has disappeared. Care needs to be taken in interpreting this simple analysis as there are certain to be other factors involved and the analysis cannot distinguish between natural and forced variability. Nevertheless, these results are in good agreement with the findings by Santer et al (2006) and Trenberth and Shea (2006) and imply that the slow variations in equatorial Atlantic SSTs are dominated by global effects.

We can now develop the following causal chain:

- SSTs in the main hurricane development regions of the NATL ocean have increased over the past century, particularly in the past 30 years, due primarily to greenhouse warming associated with anthropogenically introduced gases;
- There is a strong and statistically significant relationship between SSTs and tropical cyclone activity at longer periods, with eastern NATL SSTs explaining over 60% of the variance in overall cyclone frequency and Gulf of Mexico SSTs explaining a similar level of variance in the proportion major hurricanes;
- The SST/cyclone relationships are primarily due to transitions between distinct climate regimes and are independent of known data uncertainties.

Collectively, this causal chain leads to the strong conclusion that the current level of tropical cyclone activity in the North Atlantic is largely a response to climate change from anthropogenic causes.

We note that there has been no marked trend in the proportion of major hurricanes over the past century. Rather, Fig. 3b shows that the out of phase oscillation in major and minor hurricanes has held a remarkably stable phase and amplitude since 1900. This implies an internal oscillation of the climate system, one that is associated with a meridional changes in hurricane genesis locations between mid-latitude and equatorial regions (Fig. 5). Although the relationship between major hurricane mid-latitude proportion and SSTs in the Gulf of Mexico is indicative of a response to potential internal North Atlantic oscillations, it is not definitive. Given that this is a non-linear process, the rapid changeovers in Fig. 4 could also be the result of random changes. Furthermore it is not possible to rule out other global influences particularly with regard to atmospheric

processes that are not examined here. A more thorough investigation of these interesting transitions is required.

As mentioned previously, Landsea et al. (2006) have argued that it is not possible to find a hurricane global warming signal because theory and modeling studies (e.g. Henderson-Sellers et al 1998, Knutson and Tuleya 2004) predict only a small increase of around 5-10% in maximum winds for a 1°C increase in SST, and that this trend cannot be resolved above errors in the observing system. Our analysis completely agrees with these studies in that the mean peak intensity of all storms has not changed, as shown, for example, by the proportion of major hurricanes to all tropical cyclones during the last 50 years (Fig. 3b). But, the theory and modeling studies assumed no change in distribution with greenhouse warming. The oscillatory changes in severe storms that have occurred have been a result of a very similar oscillation in equatorial developments (Fig. 5) and the observed increasing trend in major hurricanes has arisen entirely from an increase in all tropical cyclones. Further, equatorial developments increased sharply in 1995 in association with the marked increase in Atlantic SSTs since 1970 which Santer et al (2006) have demonstrated to be largely due to greenhouse warming. Kossin and Vimont (2007) have related this to a warming phase of the AMM, which included the equatorward shift in formation and which they conclude could be influenced by greenhouse warming.

Since over 80% of all major hurricanes occur from equatorial developments, we arrive at the conclusion that increases in intense hurricanes in the NATL are associated with both a direct effect (as identified in the modeling and theoretical studies) and a change in the population distribution of storms. The increase in equatorial developments places a substantially larger number of cyclones in a region that is conducive to sustained intensification and this has been the dominant cause of both the trend in major hurricanes and the recent heightened activity. This conclusion is consistent with that of Oouchi et al (2006) who found a definite increase in both numbers and intensity of NATL tropical cyclones in a high-resolution global climate modeling study of the impact of greenhouse warming. Future modeling and theoretical studies should take into account such changes in population distribution.

5. Summary

We have identified a marked trend in NATL tropical cyclones and hurricanes since 1900 that has arisen from sharp transitions between three distinct climatic regimes as shown in Fig. 1. Regime TC1 consisted of a period of suppressed activity (6 tropical cyclones and 4 hurricanes per year) up to 1930. This was followed by a sharp increase to regime TC2, which was relatively constant at around 10 tropical cyclones and 5 hurricanes per year and lasted to 1994. From 1995 to the present we have seen a further sharp increase in tropical cyclone and hurricane frequency. We define this period as TC3, though this would be more properly assigned to the transition to another, as yet undefined, regime. TC3 has experienced an average of 15 tropical cyclones and over 8 hurricanes per year. Superimposed on these regimes is a marked out-of-phase oscillation between proportions of major and minor hurricanes (Fig. 3b) with amplitude 0.2 that occurs with no related changes in total hurricane numbers. As shown in Fig. 3b, a period of low major hurricane proportion from 1930-1944 was followed by a high period from 1945-1961, then a low period from 1962-1994, and a transition to a new high period starting in 1995. The oscillations in proportion of major and minor hurricanes are closely related to SSTs in the Gulf of Mexico and to the formation of hurricanes equatorward of 25°N, whereas the changes between TC1, TC2 and TC3 are closely related to eastern Atlantic SSTs.

We have given careful consideration to the quality of the data and particularly to changing observing system and analysis practices. We have noted with some concern the contradictory conclusions reached in a number of papers that, on the one hand, describe the data as being of high quality sufficient to determine natural variability in hurricane characteristics (Owens and Landsea 2003, Landsea et al. 1999, Goldenberg et al. 2001) but, on the other hand, of insufficient quality to determine trends that are demonstrably of similar magnitude (Landsea et al. 2006). We concur with Emanuel (2005), Webster et al. (2005) and Hoyos et al. (2006) that the trends since 1900 shown in Fig. 1 are substantial the related linear trend is significant at the 95% level (Richard Smith, personal communication 2007). We are of the strong and considered opinion that data errors cannot explain the sharp, high amplitude transitions between the climatic regimes in the

NATL, each with an increase of around 50% in cyclone and hurricane numbers, and the close relationship of these regime changes with SSTs.

There has been a marked warming trend approaching 1°C in eastern Atlantic SSTs since 1905 and this has occurred primarily in sharp transitions, with a 0.4°C increase around 1930 and a similar increase since 1970. The intervening periods were marked by relatively stable SSTs. We have cited substantial work from other studies that conclude that anthropogenically-produced greenhouse gases have contributed to this trend throughout the entire period, and that their effect has accelerated since 1970 (e.g. Santer et al. 2007). In particular, global change due to greenhouse warming is responsible for around two-thirds of the current record high Atlantic SSTs. While there is strong evidence for a contribution by internal variations in the climate system, such as the AMO, there is no persuasive evidence for this to be the dominant signal. In particular, the second leading Tropical Multidecadal Mode (TMM2) proposed by Bell and Chelliah (2006) can be more properly ascribed to an accelerating trend associated with greenhouse warming than to an actual mode of oscillation.

The variability in major hurricanes is quite different to that for tropical cyclones and hurricanes. The proportion of major hurricanes relative to all tropical cyclones has undergone a steady oscillation in both amplitude and period for the last 100 years and one with no distinct trend. This has been matched by an out of phase oscillation in minor hurricanes and is independent of the changes in either hurricane or tropical cyclone numbers. This oscillation in major hurricanes also has no apparent relation to east Atlantic SSTs but it is very closely related to the proportion of hurricanes that form equatorward of 25°N (correlation of 0.92 since 1945) and to SSTs in the Gulf of Mexico (correlation of 0.80 since 1945).

However, while the *proportion* of major hurricanes appears to be dominated by cyclic behavior, the *number* of major hurricanes has a distinct and statistically significant trend that arises from the increasing numbers of tropical cyclones. The elevated level of activity since 1995 has arisen from the unfortunate correspondence of the trend in the number of tropical cyclones and a peak in the oscillation in proportion of major hurricanes to all tropical cyclones. It remains to be determined if these relationships will be maintained, or will change with increasing global warming.

In conclusion, the observed eastern Atlantic SST changes are driven by a combination of natural variability and anthropogenic effects, with the greenhouse warming (partially offset by cooling from sulfate gases) being the dominant process. Given the strong relationship between east Atlantic SST anomalies and tropical cyclone variability presented here and corroborated by several independent studies (e.g. Kossin and Vimont 2007), we are led to the confident conclusion that the recent upsurge in tropical cyclone frequency is due in part to greenhouse warming and this is most likely the dominant effect. Earlier variations, such as the sharp increase in the 1930's, were also probably impacted by greenhouse warming. This trend in overall tropical cyclone frequency is mirrored by hurricane frequency, with the proportion of hurricanes remaining constant at 0.55 ± 0.03 since the beginning of the 20th century.

We have also found that the proportion of major and minor hurricanes to all tropical cyclones exhibits a distinct, trendless oscillation. But the combination of this oscillation with the increasing number of tropical cyclones also results in a strong trend in major hurricane numbers that is directly associated with greenhouse warming. These conclusions are robust to known errors in the available data.

This study has raised several questions, which are the subject of ongoing investigations:

1. *What maintains the remarkably steady proportion of hurricanes to all tropical cyclones?* Maximum Potential Intensity theories (Emanuel, 1995, Holland 1997) imply that an increase of SSTs should lead to a net shift in population towards higher intensities. It may be that this theoretical shift is simply too small to be discerned at this stage above the general noise level. But it also may be that there are more fundamental processes that lead to an increase in weaker systems, which apparently balances the general trend towards higher intensity.
2. *What drives the steady oscillation in proportion of major and minor hurricanes relative to all cyclones?* Previous work on natural variability does not provide an adequate explanation. For example the first leading mode of Bell and Chelliah (2006) can explain the peak in major hurricane proportion in the 1950s, but not the most recent increase. We have shown a distinct relationship with SSTs in the Gulf of Mexico, but consider this to be more of an indicator of other processes than an answer

in itself. Perhaps the major clue lies in the close relationship between oscillations in proportions of major and minor hurricanes and the proportion of hurricanes that develop equatorward and poleward of 25°N. Understanding the latter question may lead to an understanding of the former. An intriguing aspect of this oscillation is the remarkably sharp manner in which the reversal occurs (Fig. 4), which raises several questions on the type of non-linear processes involved and on their intrinsic predictability.

3. *What are the projections of tropical cyclone and hurricane frequency and intensity, given an accelerating increase in SSTs associated with greenhouse warming?* We have noted that the current climate regime seems more indicative of a transition phase than the settling into a new steady regime. Whether this will stabilize soon, or continue to increase is a matter of great scientific interest and a matter of considerable concern for coastal communities in the impacted regions. If we project past increases forward, then an increased SST over the next 50 years of, say, 1-2°C could lead to an average of 20-25 cyclones and 10-15 hurricanes per year. This conclusion raises another question; are there inhibiting factors that will impede this potential increase?

Acknowledgements

We thank Kerry Emanuel and an anonymous reviewer for helpful comments and Richard Smith for the statistical significance analysis on the linear trends. This research was supported by the Climate Dynamics Division of the National Sciences Foundation under Award ATM 0531771 and by the National Center for Atmospheric Research which is funded by the National Science Foundation.

References

- G.D. Bell and M. Chelliah 2006 Leading tropical modes associated with interannual and multidecadal fluctuations in north Atlantic hurricane activity. *J. Climat.*, **19**, 590-612.
- H.L. Bryden, H.R. Longworth, S.A. Cunningham 2005 Slowing of the Atlantic meridional overturning circulation at 25° N. *Nature*, **438**, 655-657.
- Curry, J., P.J. Webster and G.J. Holland, 2006: Mixing Politics and Science in Testing the Hypothesis that Greenhouse Warming is Causing a Global Increase in Hurricane Intensity. *Bull. Amer. Met. Soc.*, **87**, 1025–1037.
- T.L. Delworth and M.E. Mann 2000 Observed and simulated multidecadal variability in the Northern Hemisphere. *Clim. Dyn.*, **16**, 661-676.
- J.B. Elsner and B. Kocher 2000 Global tropical cyclone activity: A link to the North Atlantic Oscillation, *Geophys. Res. Lett.*, **27**, 129–132.
- J.B. Elsner, B.H. Bossak and X.-F. Niu 2001 Secular changes to the ENSO-U.S. hurricane relationship. *Geophys. Res. Lett.*, **28**, 4123–4126.
- J.B. Elsner, X. Niu and T.H. Jagger 2004 detecting shifts in hurricane rates using a Markov Chain Monte Carlo approach. *J. Climat.*, **17**, 2652–2666.
- J.B. Elsner and T.H. Jagger 2006 Prediction models for annual U.S. hurricane counts. *J. Climat.*, **12**, 2935–2952.
- K. Emanuel 1995 Sensitivity of tropical cyclones to surface exchange coefficients and a revised steady-state model incorporating eye dynamics. *J. Atmos. Sci.*, **52**, 3969-3976.
- K. Emanuel 2005 Increasing destructiveness of tropical cyclones over the past 30 years. *Nature*, **436**, 686-688.
- D.B. Enfield, A.M. Mestas-Nunez and P.J. Trimble 2001 The Atlantic multidecadal oscillation and its relation to rainfall and river flows in the continental U.S., *Geophys. Res. Lett.*, **28**, 2077-2080.
- C. K. Folland, T. N. Palmer and D. E. Parker 1986 Sahel rainfall and worldwide sea temperatures, 1901–85. *Nature*, **320**, 602-607.
- S.B. Goldenberg and L. J. Shapiro 1996 Physical mechanisms for the association of El Niño and West African rainfall with Atlantic major hurricane activity. *J. Climate.*, **9**, 1169–1187.

- S.B. Goldenberg, C. W. Landsea, A. M. Mestas-Nuñez, and W. M. Gray 2001 The recent increase in Atlantic hurricane activity: Causes and implications. *Science*, **293**, 474–479.
- W.M. Gray 1968: Global view of the origin of tropical disturbances and storms. *Mon. Wea. Rev.*, **96**, 669–700.
- W.M. Gray 1984 Atlantic seasonal hurricane frequency. Part II: Forecasting its variability. *Mon. Wea. Rev.*, **112**, 1669–1683.
- W.M. Gray 1990 Strong association between West African rainfall and U.S. landfall of intense hurricanes. *Science*, **249**, 1251–1256.
- W.M. Gray and P.J. Klotzbach 2006
<http://typhoon.atmos.colostate.edu/forecasts/2005/nov2005/>
- A. Henderson-Sellers, H. Zhang, G. Berz, K. Emanuel, W.M. Gray, C. Landsea, G.J. Holland, J. Lighthill, S-L. Shieh, P.J. Webster, and K. McGuffie 1998 Tropical cyclones and global climate change: A post-IPCC assessment. *Bull. Amer. Meteor. Soc.*, **79**, 19–38.
- J.C. Hess and J.B. Elsner 1994 Extended-range hindcasts of tropical-origin Atlantic hurricane activity. *Geophys. Res. Lett.*, **21**, 365–368.
- G.J. Holland, 1981: On the quality of the Australian tropical cyclone data base. *Aust. Met. Mag.*, **29**, 169-181.
- G.J. Holland 1997 The maximum potential intensity of tropical cyclones. *J. Atmos. Sci.*, **54**, 2519-2541.
- C.D. Hoyos, P.A. Agudelo, P.J. Webster and J.A. Curry 2006 Deconvolution of the factors contributing to the increase in global hurricane activity. *Science*, **312**, 94-97.
- B.R. Jarvinan, C.J. Neumann and M.A.S. Davis 1984 A tropical cyclone data tape for the North Atlantic basin, 1886–1983: Contents, limitations, and uses. NOAA Tech. Memo., NWS NHC 22, 21 pp. [Available from NOAA/NWS/NHC, Miami, FL 33165.] Database available at: www.nhc.noaa.gov/
- E.C. Kent and P.G. Challenor 2006 Toward estimating climatic trends in SST. Part II: random errors. *J. Atmos. and Ocean. Tech.*, **23**, 476–486.
- T.B. Kimberlain and J.B. Elsner 1998 The 1995 and 1996 North Atlantic Hurricane Seasons: A Return of the tropical-only hurricane. *J. Climat.*, **11**, 2062–2069.

- P.J. Klotzbach 2006 Trends in global tropical cyclone activity over the past twenty years (1986–2005). *Geophys. Res. Lett.*, **33**, L10805.
- P.J. Klotzbach and W.M. Gray 2003 Forecasting September Atlantic basin tropical cyclone activity. *Wea. Forec.*, **18**, 1109–1128.
- J.R. Knight, R. J. Allan, C. K. Folland, M. Vellinga, and M. E. Mann 2005 A signature of persistent natural thermohaline circulation cycles in observed climate. *Geophys. Res. Lett.*, **32**, L20708.
- T.R. Knutson and R.E. Tuleya 2004 Impact of CO₂-induced warming on simulated hurricane intensity and precipitation: Sensitivity to the choice of climate model and convective parameterization. *J. Climat.*, **17**, 3477–3495.
- T. R. Knutson, T. L. Delworth, K. W. Dixon, I. M. Held, J. Lu, V. Ramaswamy, M. D. Schwarzkopf, G. Stenchikov and R. J. Stouffer 2006 Assessment of twentieth-century regional surface temperature trends using the GFDL CM2 coupled models. *J. Climat.*, **19**, 1624–1651.
- J.P. Kossin and D.J. Vimont 2007 A more general framework for understanding Atlantic hurricane trends. *Bull. Amer. Meteor. Soc.* (*in press*).
- J.P. Kossin, K.R. Knapp, D.J. Vimont and R.J. Murnane 2007 A globally consistent reanalysis of hurricane trends. *Geophys. Res. Letters*. **34**, L04815, doi:10.1029/2006GL028836.
- C.W. Landsea 1993 A climatology of intense (or major) Atlantic hurricanes. *Mon. Wea. Rev.*, **121**, 1703–1713.
- C.W. Landsea, R.A. Pielke Jr., and A.M. Mestas-Nuñez 1999 Atlantic basin hurricanes: Indices of climate change. *Climate Change*, **42**, 89–129.
- C.W. Landsea, B.A. Harper, K. Horau, J.A. Knaff 2006 Can we detect trends in extreme tropical cyclones? *Science Perspectives*, **313**, 452-454.
- G. S. Lehmiller, T. B. Kimberlain, and J. B. Elsner 1997 Seasonal Prediction Models for North Atlantic Basin Hurricane Location. *Mon. Weath. Rev.* **125**, 1780–1791
- E.N. Lorenz 1963 Deterministic nonperiodic flow *J. Atmos. Sci.*, **20**, 130–141.
- M.E. Mann and K. Emanuel 2006 Atlantic hurricane trends linked to climate change. *EOS*, **87**, 233-244.

- G.A. Meehl, W.M. Washington, C. M. Ammann, J.M. Arblaster, T. M. L. Wigley and C. Tebaldi 2004 Combinations of natural and anthropogenic forcings in twentieth-century climate. *J. Climat.*, **17**, 3721–3727.
- P.J. Michaels, P.C. Knappenberger and C. Landsea 2005 Comments on “Impacts of CO₂-induced warming on simulated hurricane intensity and precipitation: Sensitivity to the choice of climate model and convective scheme. *J. Climat.*, **18**, 5179-5182.
- C.J. Neumann, B. R. Jarvinen, C. J. McAdie, and J. D. Elms 1993 *Tropical cyclones of the North Atlantic Ocean, 1871–1992*. NOAA National Climatic Data Center and National Hurricane Center, 193 pp.
- NOAA 2005 <http://www.magazine.noaa.gov/stories/mag184.htm>
- NOAA 2006 <http://www.nhc.noaa.gov/aboutsshs.shtml>
- K. Oouchi, J. Yoshimura, H. Yoshimura, R. Mizuta, S. Kusunoki and A. Noda 2006 Tropical cyclone climatology in a global-warming climate as simulated in a 20 km-mesh global atmospheric model: Frequency and wind intensity analyses. *J. Meteor. Soc. Jap.*, **84**, 259-276.
- B.F. Owens and C.W. Landsea 2003 Assessing the skill of operational Atlantic seasonal tropical cyclone forecasts. *Wea. Forec.*, **18**, 45–54.
- N. A. Rayner, P. Brohan, D. E. Parker, C. K. Folland, J. J. Kennedy, M. Vanicek, T. J. Ansell and S. F. B. Tett 2006 Improved analyses of changes and uncertainties in sea surface temperature measured in situ since the mid-nineteenth century: The HadSST2 Dataset. *J. Climat.*, **19**, 446–469.
- B.D. Santer, T.M.L. Wigley, P.J. Glecker, C. Bonfils, M.F. Wehner, K. AchutaRao, T.P. Barnett, J.S. Boyle, W Bruggemann, M. Fiorino, N. Gillett, J.E. Hansen, P.D. Jones, S.A. Klein, G.A. Meehl, S.C.B. Raper, R.W. Reynolds, K.E. Taylor and W.M. Washington 2006 Forced and unforced ocean temperature changes in Atlantic and Pacific tropical cyclone genesis regions. *Proc. Nat. Acad. Sci.*, **103**, 13905-13910.
- M.A. Saunders and A.S. Lea 2005 Seasonal prediction of hurricane activity reaching the coast of the United States. *Nature*, **434**, 1005-1008.
- Shapiro, L. J., and S. B. Goldenberg 1998 Atlantic sea surface temperatures and tropical cyclone formation. *J. Climate.*, **11**, 578–590.

- R. H. Simpson and J.M. Pelissier 1971 Atlantic hurricane season of 1970. *Mon. Wea. Rev.*, **99**, 269–277.
- D.B. Spiegler 1971 The unnamed Atlantic tropical storms of 1970. *Mon. Wea. Rev.*, **99**, 966–976.
- R.T. Sutton and D.L.R. Hodson 2005 Atlantic Ocean Forcing of North American and European Summer Climate, *Science*, **309**, 115-118.
- K.E. Trenberth and T. J. Hoar 1996 The 1990 - 1995 El Niño-Southern Oscillation event: Longest on record, *Geophys. Res. Lett.*, **23**, 57-60.
- K.E. Trenberth and D.J. Shea 2006 Atlantic hurricanes and natural variability. *Geophys. Res. Lett.*, **33**, L12704, doi:10.1029/2006GL026894.
- F. Vitart and J. L. Anderson 2001 Sensitivity of Atlantic tropical storm frequency to ENSO and interdecadal variability of SSTs in an ensemble of AGCM integrations. *J. Climat.*, **14**, 533–545.
- P.J. Webster, G. J. Holland, J. A. Curry and H.-R. Chang 2005 Changes in tropical cyclone number, duration, and intensity in a warming environment. *Science*, **309**, 1844-1846.

Table 1: Summary of statistics for tropical cyclone, hurricane proportion and eastern NATL SST anomaly (from the 1905-2005 mean) for the three climate regimes, TC1-3, identified in Fig. 1. The standard deviations and min/max are for annual seasonal means.

Regime	Period	Tropical Cyclones			Hurricane Proportion			East NATL SST Anomaly		
		Mean	Std. Dev.	Min/Max	Mean	Std. Dev.	Min/Max	Mean	Std. Dev.	Min/Max
TC1	1905-1930	6.0	3.2	1/14	0.58	0.25	0/1	-0.34	0.29	-0.7/+0.3
TC2	1931-1994	9.4	3.2	4/21	0.54	0.16	0.13/0.86	0.06	0.25	-0.5/+0.7
TC3	1995-2005	14.8	5.0	7/27	0.57	0.12	0.33/0.71	0.42	0.28	-0.1/+0.8

Figure Captions

Figure 1. Tropical cyclone occurrence in the North Atlantic together with East Atlantic SST anomalies for the hurricane season (red line) from 1855-2005. TC1, 2 and 3 refer to climate regimes discussed in the text. Blue points indicate annual totals and the black line is a 9-year running mean.

Figure 2: Phase diagram showing relationship between 5-y filtered annual tropical cyclone, hurricane and major hurricane numbers and SST in the East Atlantic. The three climate regimes discussed in the text are indicated and the changeover between the regimes occurs in the short joining contours. Note that regime 3 has not yet settled into a stable pattern.

Figure 3. Variations in hurricanes (blue), and major (red) and minor (black) hurricanes from 1855-2005: a) annual number, and, b) proportion relative to all named storms. All data have been smoothed by a 9-year running mean and the vertical line indicates the commencement of reliable intensity data.

Figure 4. Unsmoothed annual variation in annual major hurricane proportions (relative to all named storms) from 1935-2005 (red line) showing the sharp transition between regimes. The black lines show the means for each regime.

Figure 5. Variations in proportions relative to all named storms of major hurricanes (red) and hurricanes forming equatorward of 25°N (black). All data have been smoothed by a 9-y running mean and the vertical line indicates the commencement of reliable intensity data.

Figure 6. Variation of hurricane season SST anomalies (from the 1855-2005 mean) for the eastern Atlantic (red), western Atlantic (black), Gulf of Mexico (blue) and eastern Pacific (black dashed). All series have been smoothed with a 9-year running mean.

Figure 7. Differences of hurricane season SST anomalies after subtracting off the eastern Pacific anomaly for: the eastern Atlantic (red), western Atlantic (black) and Gulf of Mexico (blue). All series have been smoothed by a 9-year running mean and the scale is the same as in Fig. 6. Note that the sharp upturn after 1995 arose from an anomalous cooling of the eastern North Pacific.

Figures

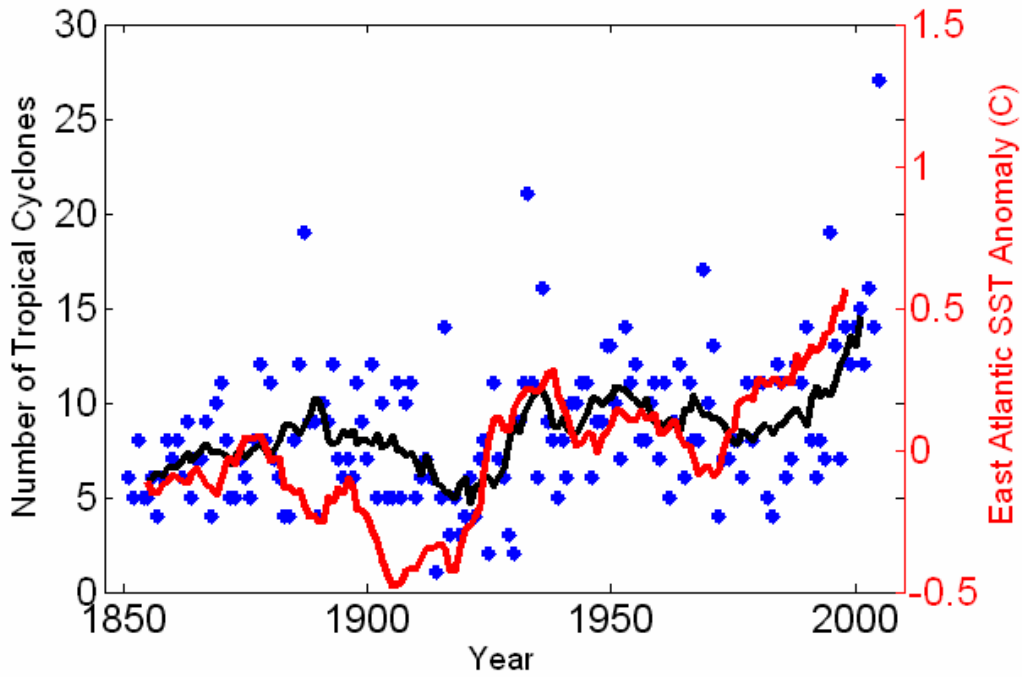


Figure 1. Tropical cyclone occurrence (blue points indicate annual totals and the black line is a 9-y running mean) in the North Atlantic together with East Atlantic SST anomalies for the hurricane season (red line) from 1855-2005. TC1, 2 and 3 refer to climate regimes discussed in the text.

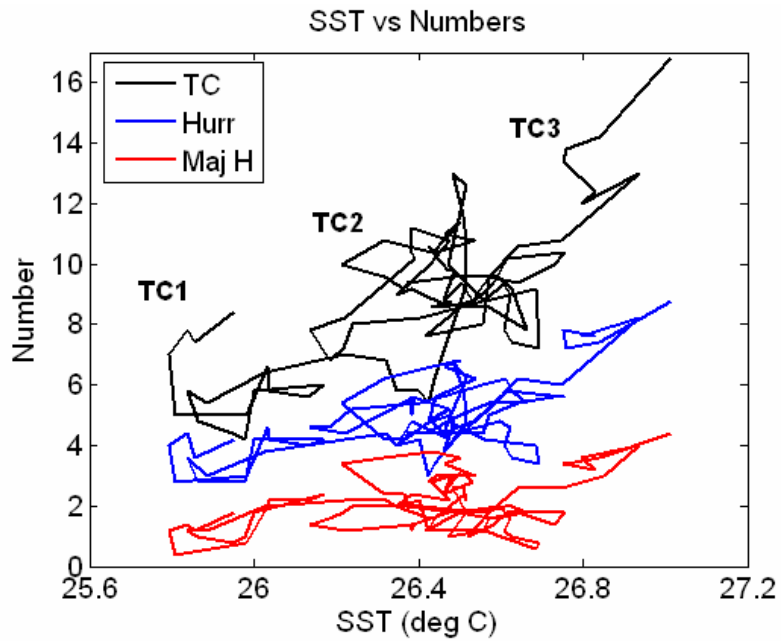


Figure 2: Phase diagram showing relationship between 5-y filtered annual tropical cyclone, hurricane and major hurricane numbers and SST in the East Atlantic. The three climate regimes discussed in the text are indicated and the changeover between the regimes occurs in the short joining contours. Note that regime 3 has not yet settled into a stable pattern.

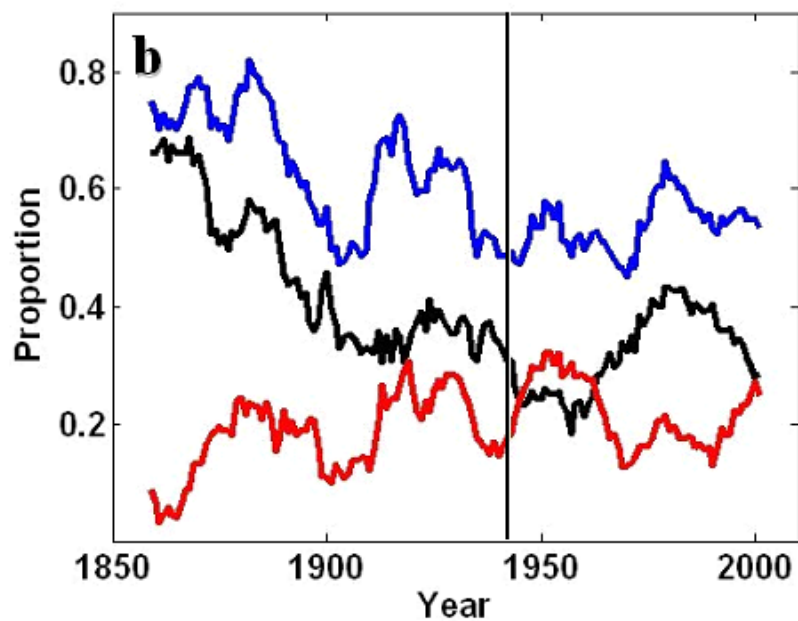
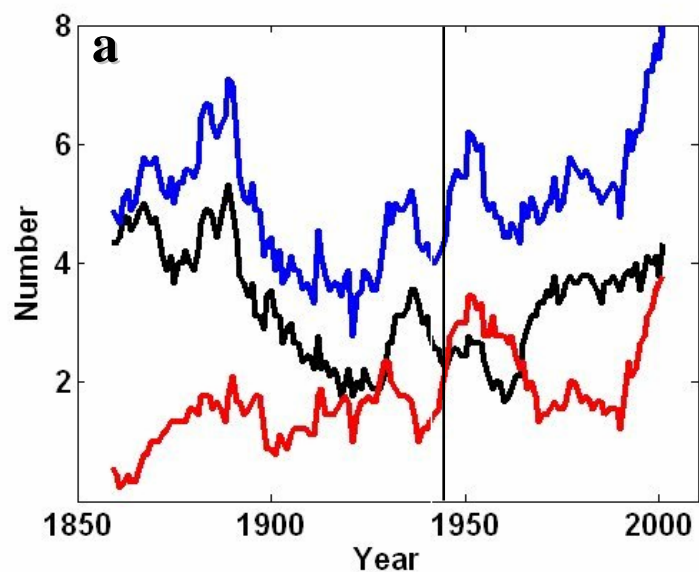


Figure 3. Variations in hurricanes (blue), and major (red) and minor (black) hurricanes from 1855-2005: a) annual number, and, b) proportion relative to all named storms. All data have been smoothed by a 9-y running mean and the vertical line indicates the commencement of reliable intensity data.

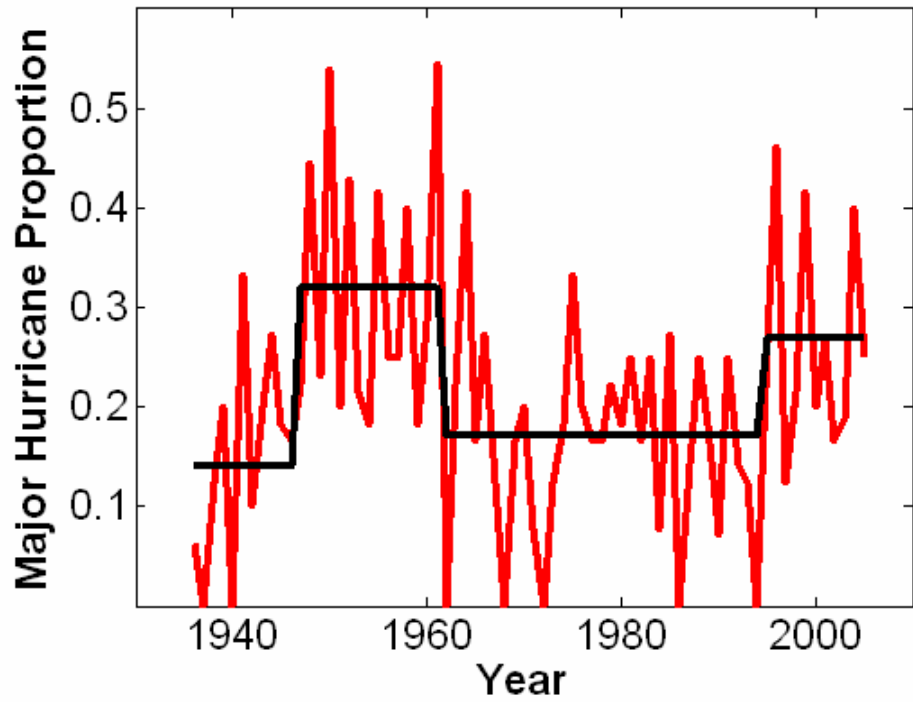


Figure 4. Unsmoothed annual variation in annual major hurricane proportions (relative to all named storms) from 1935-2005 (red line) showing the sharp transition between regimes. The black lines show the means for each regime.

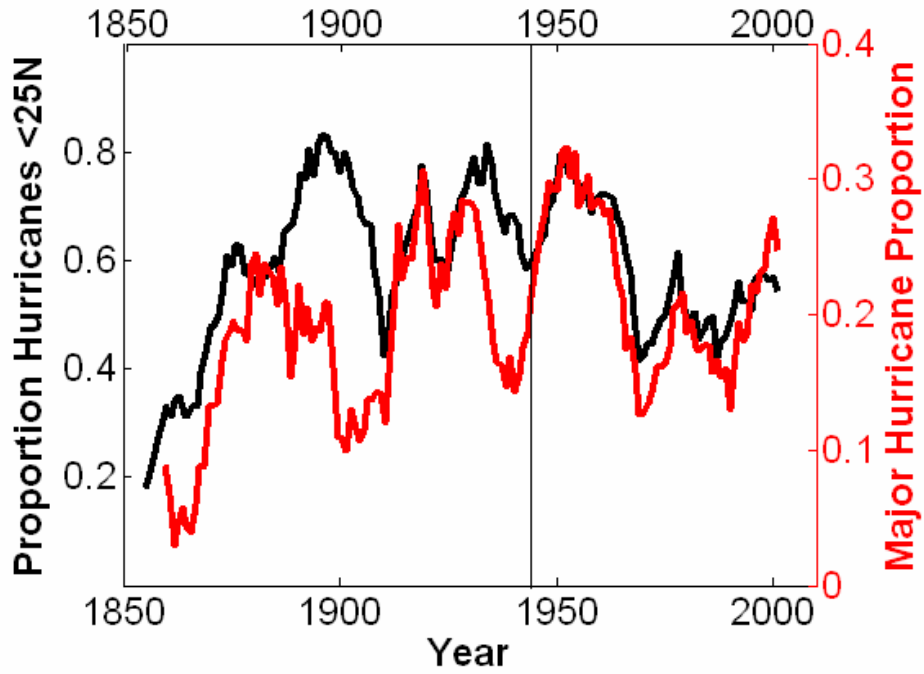


Figure 5. Variations in proportions relative to all named storms of major hurricanes (red) and hurricanes forming equatorward of 25°N (black). All data have been smoothed by a 9-y running mean and the vertical line indicates the commencement of reliable intensity data.

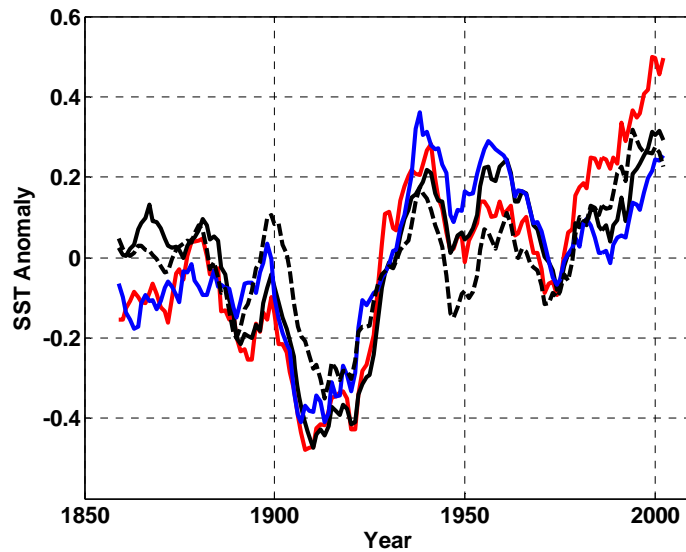


Figure 6. Variation of hurricane season SST anomalies (from the 1855-2005 mean) for the eastern Atlantic (red), western Atlantic (black), Gulf of Mexico (blue) and eastern Pacific (black dashed). All series have been smoothed with a 9-y running mean.

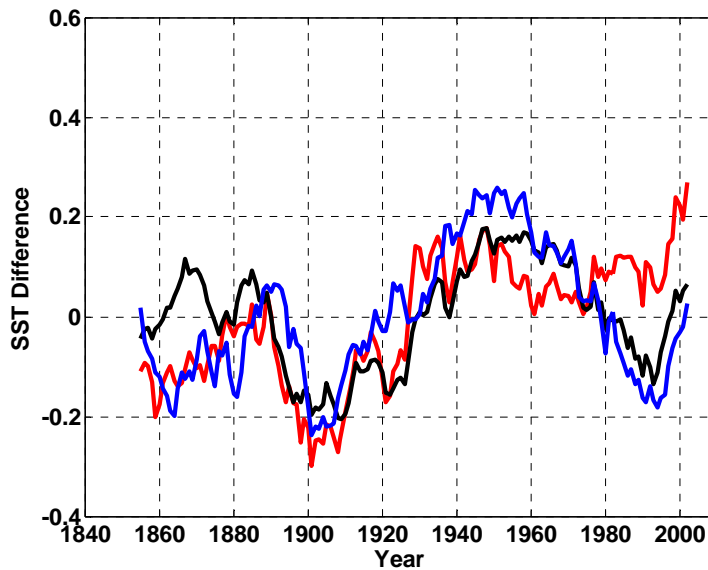


Figure 7. Differences of hurricane season SST anomalies after subtracting off the eastern Pacific anomaly for: the eastern Atlantic (red), western Atlantic (black) and Gulf of Mexico (blue). All series have been smoothed by a 9-y running mean and the scale is the same as in Fig. 6. Note that the sharp upturn after 1995 arose from an anomalous cooling of the eastern North Pacific.