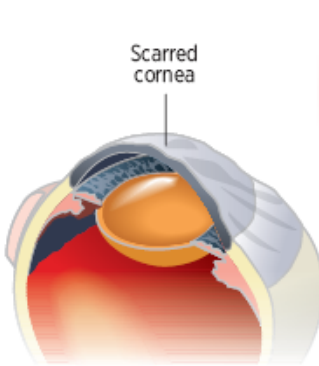
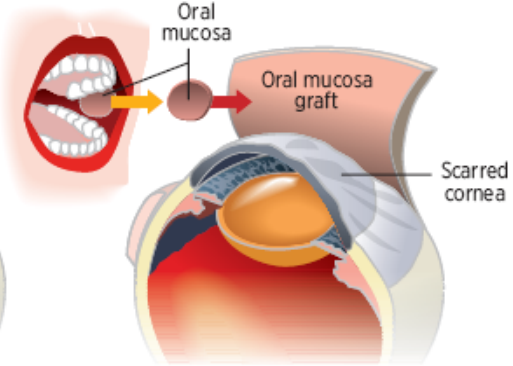


# A tooth for an eye: How the procedure works

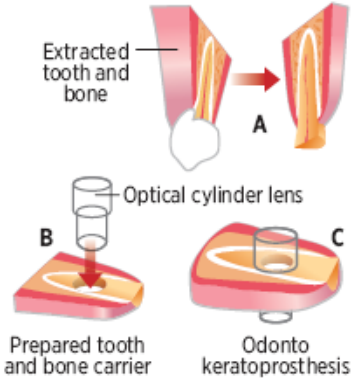
**1** Doctors scour away scar tissue from the cornea.



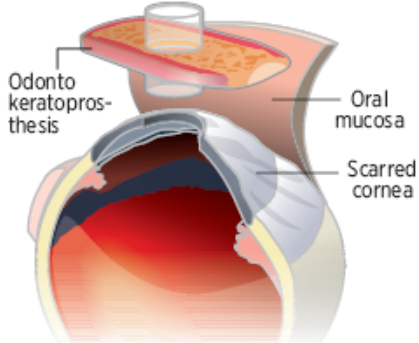
**2** Take a patch of skin, or mucosa, from inside the cheek and graft it over cornea.



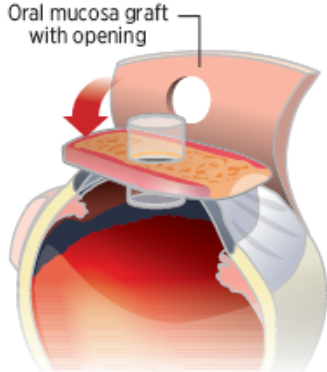
**3** Extract a tooth, shave it flat horizontally, drill a hole in it and insert an acrylic lens.



**4** Cut a flap in the cheek skin covering the cornea, create a hole down into the eye and insert the lens into the hole, with the tooth fragment lying atop the cornea.



**5** Replace the skin flap, cutting a small hole for the lens to poke through.



**6** Put on a cosmetic eye shell to give the new eye a normal appearance.

