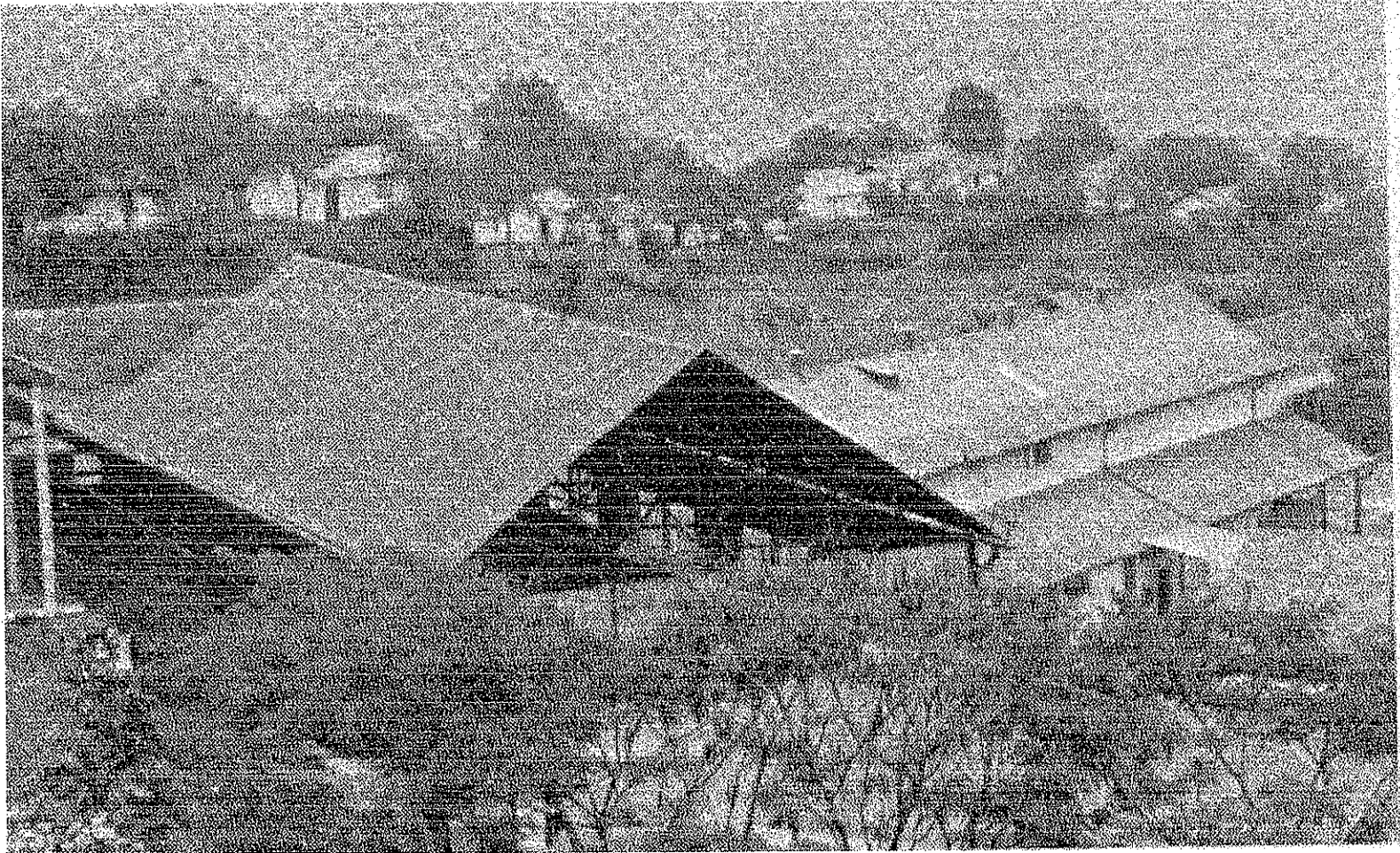


CAFETAL DE HELVETIA HELVETIA COFFEE PLANTATION

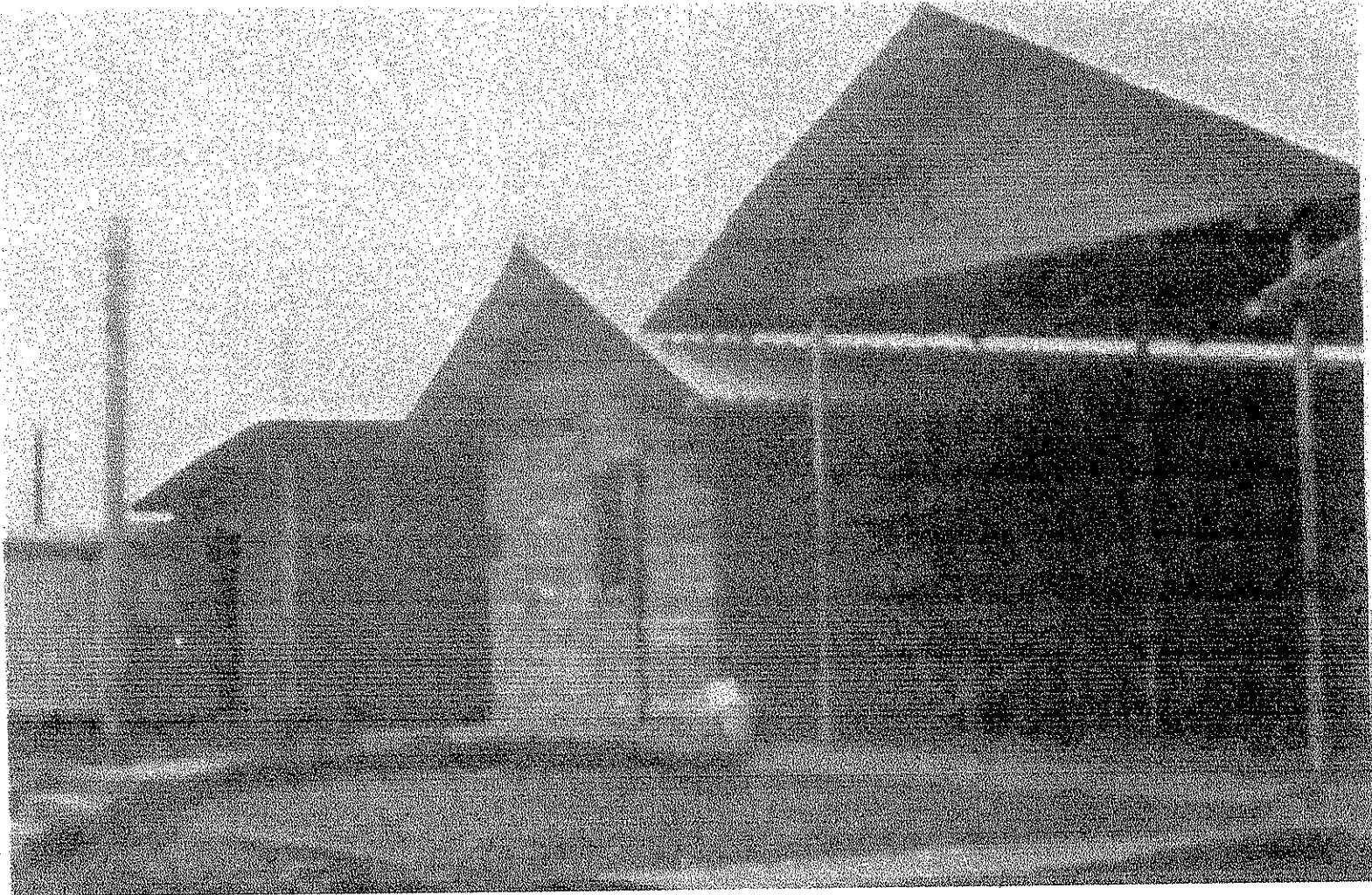
Helvetia Coffee Plantation owned by the Alejo's family, in Retalhuleo, Guatemala, where the first group of aviators stayed until the RAY Air Base was completed



Cafetal de Helvetia, propiedad de la familia Alejo, donde los primeros pilotos de la Fuerza Aerea estuvieron hasta que la Base RAYO fue terminada

RAYO AIR BASE HEADQUARTERS BASE AEREA RAYO, JEFATURA

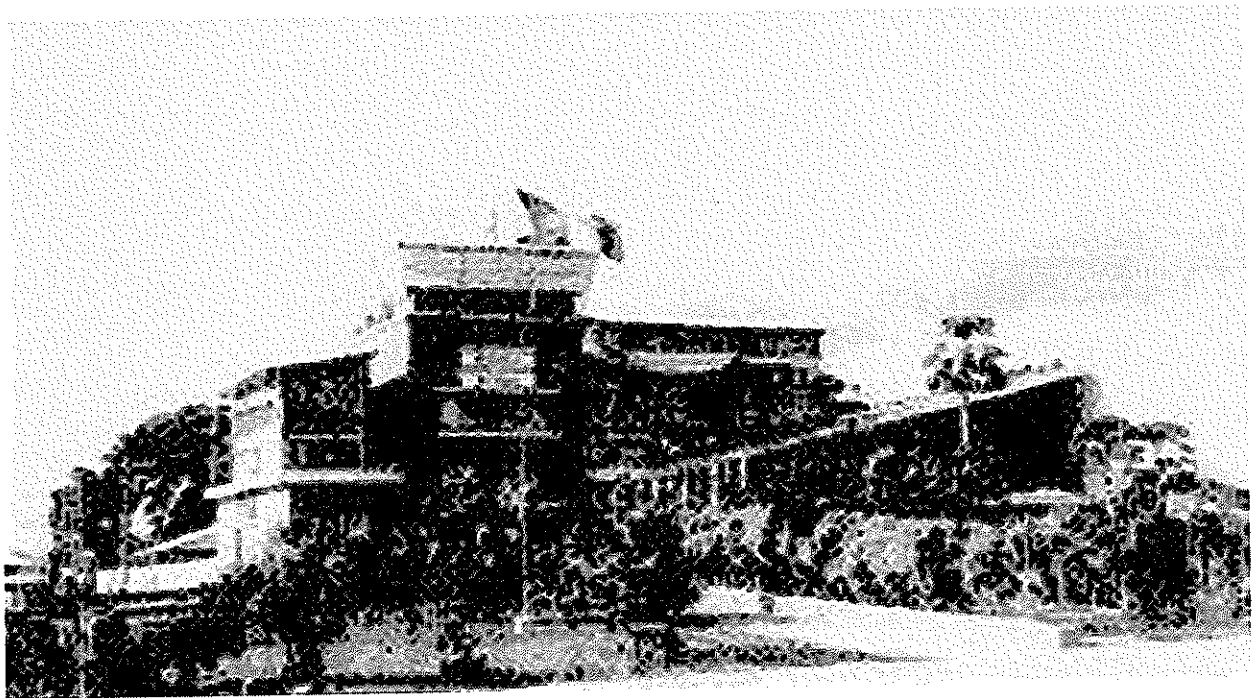
Headquarters of the Liberation Air Force at RAYO Air Force Base in the vicinity of Retalhuleo, Guatemala.



Jefatura de la Fuerza Aerea de Liberacion, Base Aerea RAYO, en la vecinidad de Retalhuleo, Guatemala

CUBAN LIBERATION AIR FORCE RAYO BASE RETALHULEU, GUATEMALA

Main building of the Cuban Liberation Air Force RAYO Base, that was the Headquarters of the American advisors, the kitchen, dinning room, as well as "Isolations room" for the crews about to fly missions over Cuban territory. View taken from the ramp. At the front right was located the movie screen, where the main attraction was KIM NOVAC



Edificio principal de la Base de la Fuerza Aerea de Liberacion "RAYO". Jefatura de los asesores americanos, la cocina y el comedor, como tambien el "cuarto de isolacion" para las tripulaciones lista para volar misiones a territorio cubano. Vista tomada desde la rampa. En la parte inferior derecha estaba la pantalla del cine, donde la mayor atraccion era KIM NOVAC

BASE RAYO RAMP

RAYO Base ramp in Retalhuleo, located at the west of the town of the same name, in the Pacific Ocean side of Guatemala. Shown Douglas "INVADER" B-26 bombers and Curtiss "Commando" C-46 cargo planes, used for missions to Cuba before the Invasion and after removing Guatemalan Air Force insignias and flag. View taken from the control tower at the building



Rampa de la Base RAYO en Ratalhuleo, localizada al Oeste del pueblo del mismo nombre en la zona del Pacifico de Guatemala. En la rampa aviones de bombardero Douglas B-26 "INVADER" y aviones de carga Curtiss "Comando" C-46, usados en misiones a Cuba antes de la Invasion, despues de remover las insignias y bandera Guatemalteca. Vista tomada desde la torre de control del aeropuerto